



## Cultural Site Sheet

Cultural site name	Piazza San Giovanni
Type of site	Square
Address	Piazza San Giovanni
City	Volterra (PI)
Contacts	+39 0577 286300
Website	<a href="http://www.animadivolterra.it">www.animadivolterra.it</a> Email: <a href="mailto:animadivolterra@operalaboratori.it">animadivolterra@operalaboratori.it</a>
WCAG 2.1 compliant accessible website	NO

**TESTED BY:** [Handy Superabile Social Promotion Association](#) in summer 2024

**Please note** The following information refers to the date of verification shown at the bottom of each sheet. **The Association** is not responsible for any significant changes made by the property after the visit.

### Summary

Cultural Site Sheet.....	1
Description, general information .....	2
Arrival at the property.....	2
Private/public parking.....	2
Pathway from the car park to the entrance .....	3
Itineraries .....	5
Toilets for guests with reduced mobility .....	6
Medical practices/healthcare facilities.....	8

Project carried out with the contribution of the





## Description

Piazza San Giovanni is the religious square of Volterra. In the past it was also called Piazza del Duomo. Around the year 1000, the Episcopate, the Chapter of Canons and three churches overlooked this square: the chapel of Sant'Ottaviano, the church of Santa Maria and the baptistery of San Giovanni, each with its own cemetery. From the mid-1000s the toponymy underwent a change and the church of Sant'Ottaviano was no longer mentioned; probably that church was abandoned and the building destined for another use. At the beginning of the thirteenth century in this square we find only one cemetery, the cloister of the canons, the Cathedral of Santa Maria, the Baptistery and the Hospital.

## General information

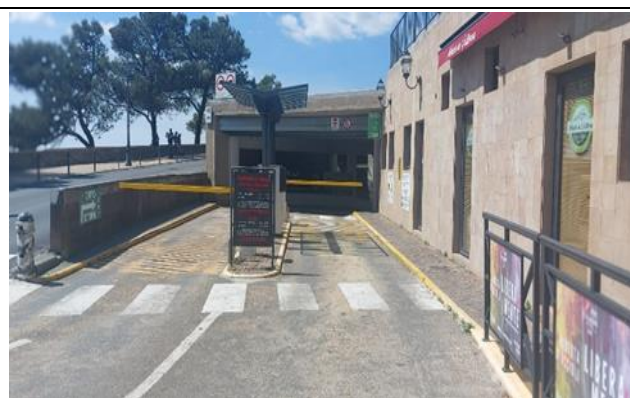
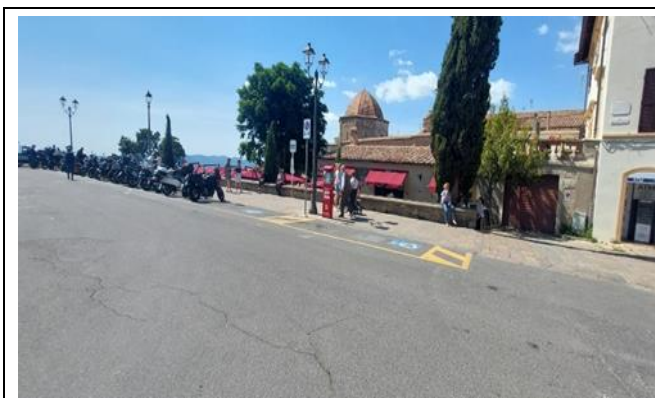
Opening and closing period	Always open
Times	Always open
Ticket cost	Free admission
Pet access	YES

## Arrival at the property

### Private/public parking

Presence of private parking	NO
Public parking nearby	YES, underground
Type of flooring in the public car park	asphalt
Presence of parking space reserved for people with disabilities	YES number 2 at the entrance to the historic center and 1 for every 50 spaces in the underground car park.





### Pathway from the car park to the entrance

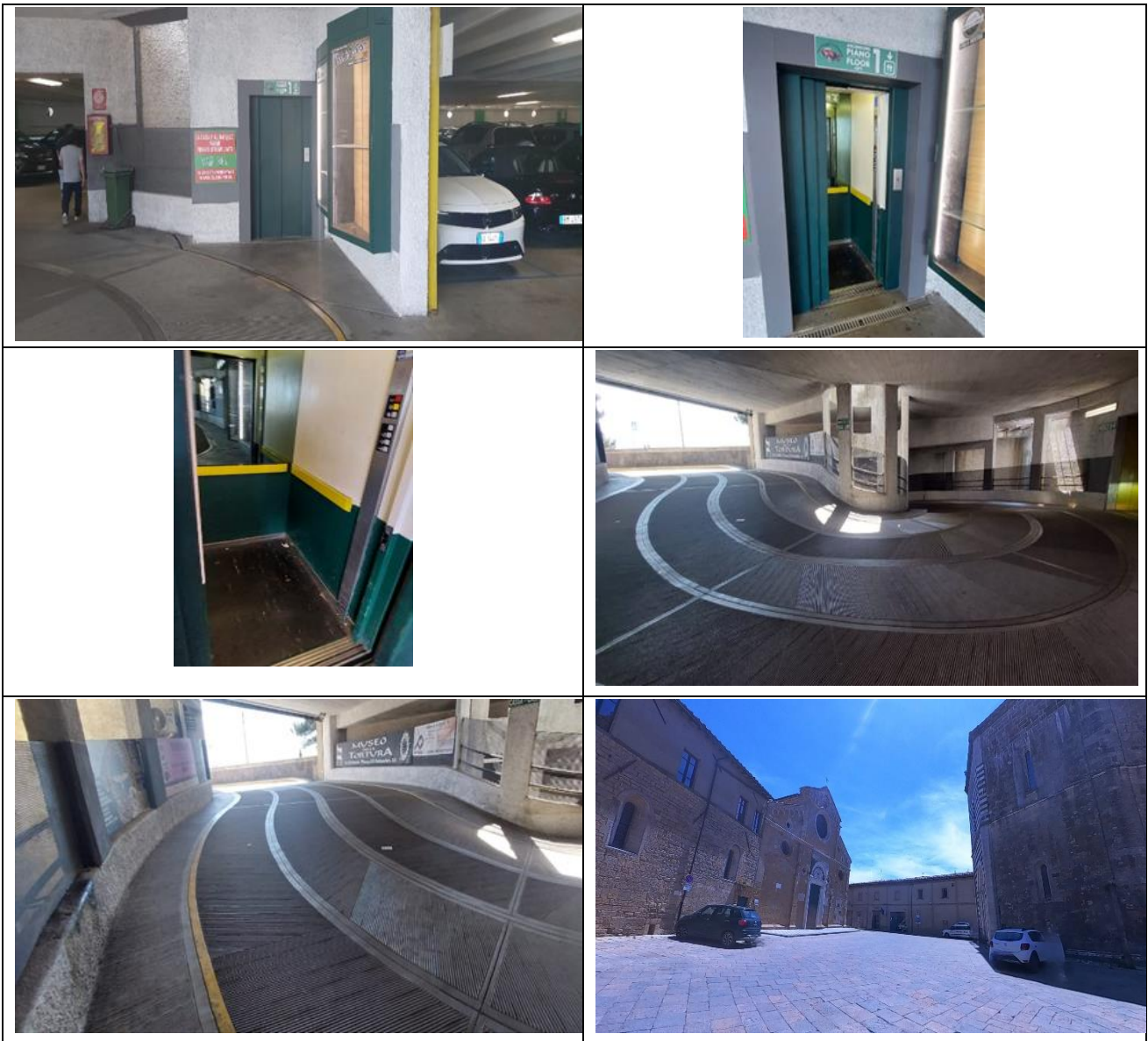
The property can be reached from the car park	With lift, door width 80 cm, depth and internal width 120 x 120. External call key height 120 cm, internal keys 125/150 cm
Path from the lift to the parking exit	Via a 9-meter long ramp with a slope of 13%. The church can be reached through avenues of the historic center with stone block paving.
Distance from parking to entrance	290 meters
There are indicators and tactile maps	NO
There is an accessible entrance	YES secondary entrance from the chapel
How to access the site	<input type="checkbox"/> flat <input checked="" type="checkbox"/> via ramp single length 102 cm, width 108 cm, slope 15%, no handrail
Useful width of door/entrance gate	Above 90 cm
Type of door	with 2 doors that can be opened inwards
Eventual notes	Path from the underground car park and the parking spaces reserved for guests with reduced mobility located in Piazza Martiri di Libertà



Project promoted by



Regione Toscana





Project carried out with the contribution of the



Presidenza del  
Consiglio dei Ministri  
Ministro per la disabilità



## Itineraries

Presence of maps	YES
Touch indicators and visual-touch maps	NO
Presence of didactic panels	YES
Audio guide	YES
Touch Models	NO
Multimedia workstations accessible from a seated position	NO
Routes dedicated to children	NO
Stopping points	YES
Route spread over several floors	NO
Access to the square	Flat on stone block pavement
	
Bulletin board/information panels and captions	<input checked="" type="checkbox"/> captions positioned 80/140 cm from the ground of the buildings in the square





**Toilets for guests with reduced mobility**

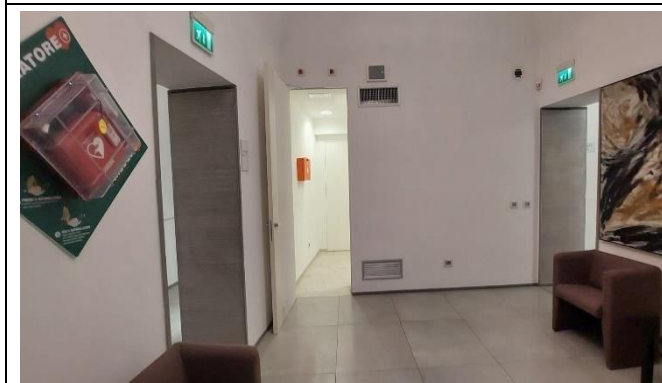
Number of <b>accessible toilets</b> for guests with reduced mobility	1 toilet with 2 men's and women's bathrooms. The toilets are located in the ticket office inside the Palace of the Exhibition Center (ancient hospital)
Location	ground floor.
How to access the premises	<input checked="" type="checkbox"/> flat
Usable width of the entrance door	88
Toilet height	50
Toilet seat with open front tooth	YES
Support handles	to the left of the toilet
Flexible shower on the side of the toilet	YES

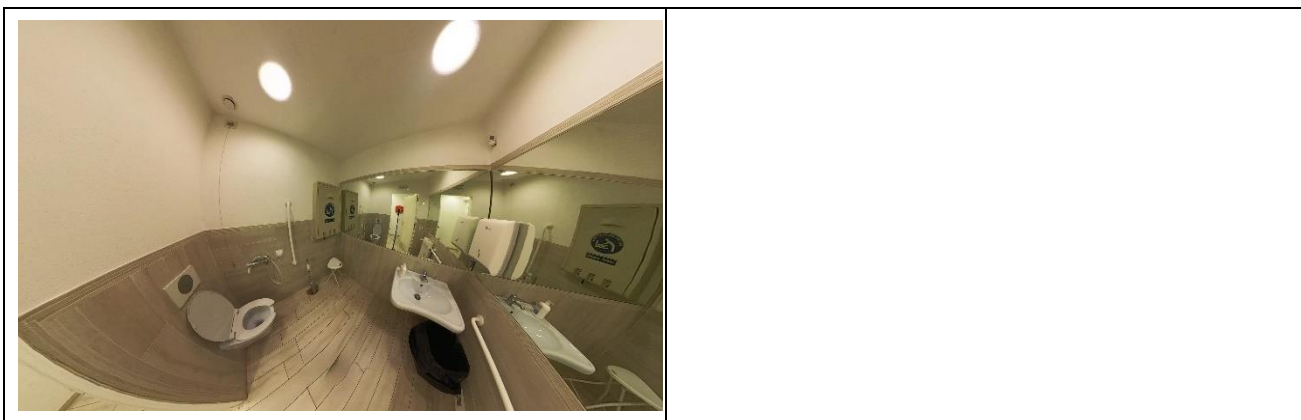
Project carried out with the contribution of the





Free space on the sides of the men's toilet	left 24 cm right Above 90 cm frontal Above 90 cm
Free space on the sides of the women's toilet	left 20 cm right Above 90 cm frontal Above 90 cm
Electric doorbell/telephone	YES
Washbasin with space underneath for wheelchair approach	63 cm men's bathroom, 64 cm women's bathroom
Height from the ground lower edge mirror	105 cm men's bathroom, 102 women's bathroom
Baby changing table	YES
Eventual notes	The changing table is only found in the women's bathroom. The female toilet is located at the entrance on the right side, the male toilet at the front entrance.





### Medical practices/healthcare facilities

Hospitals near the property	S. Maria Maddalena Volterra Hospital, Borgo San Lazzero 5, Tel +39 0588 91911
Other healthcare facilities	Azienda UsI Volterra Borgo San Lazzero 5, Tel +39 0588 91822  Pronto soccorso at Ospedale Tel +39 0588 91701  Dialysis service on holiday Tel +39 0588 91782 at the Hospital

TESTED BY: [Handy Superabile Social Promotion Association](#) in 2024

